



# Ball Transfer Unit A800-30-15

Ball Units Series A8 - Wheel S-800


 -30 °C - +70 °C

  
swivels easily

  
wear resistant

  
shock proof

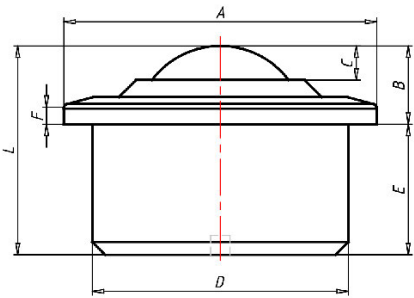
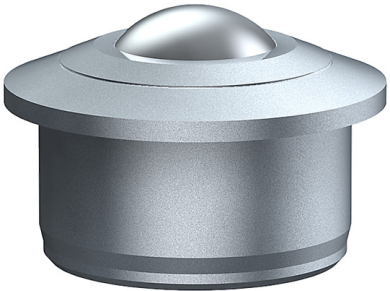
  
floor protective

  
weather proof

## Wheel

Ball: zinc-plated or stainless steel

Housing, zinc-plated or stainless steel



## Ball Transfer Unit

Series: 800

Ball-Ø mm: 30

Finish housing: stainless steel

Finish Balls: stainless steel

Load Capacity kg: 200

Load capacity tested according to EN 12530 and EN 12527

A mm: 55

B mm: 13,8

C mm: 6

D mm: 45

E mm: 23,0

F mm: 3,4

L mm: 36,8

## Advantages

- ✓ Casing made of solid steel on the lathe
- ✓ High load capacity
- ✓ Low profile
- ✓ Holes to let out dirt

©Copyright 2024 Rollenbau GmbH, [www.rollenbau.at](http://www.rollenbau.at) 07.05.2024

## Applications

- Haulage way
- Assembly lines